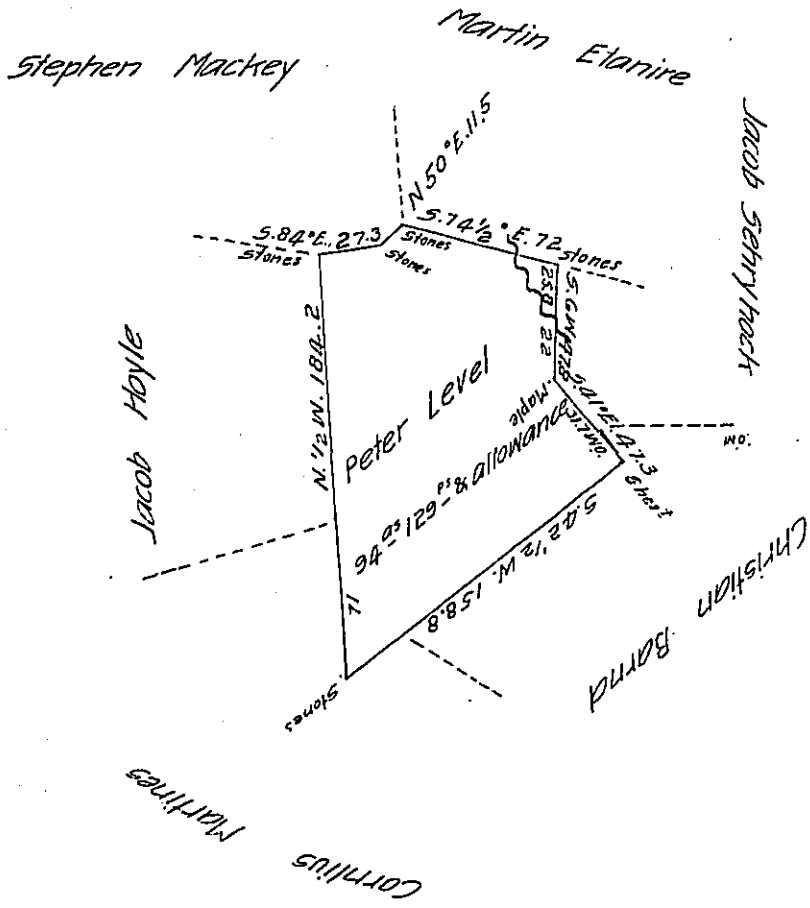


M. W. D. S.

Note. This tract is unimproved



Situate on the head waters of Stoney Creek in Brothers Valley township (late Bedford) now Somerset County & surveyed in the year 1786 by Alexander McGlean Esquire late Deputy Surveyor in pursuance of a Warrant for 100^{ac} Dated 23rd day of February 1786 granted to Peter Level, as appears by his official Draught thereof remaining in my office & Certified this 13th day of November 1822

Musser Wells D. S. 50.

To Samuel Cochran Esquire }
 Surveyor General of Penns^a }

IN TESTIMONY that the above is a copy of the original remaining on file in the Department of Internal Affairs of Pennsylvania, made conformably to an Act of Assembly approved the 16th day of February, 1833, I have hereunto set my Hand and caused the Seal of said Department to be affixed at Harrisburg, this twenty seventh day of October 1905

Isaac R. Brown
 Secretary of Internal Affairs.